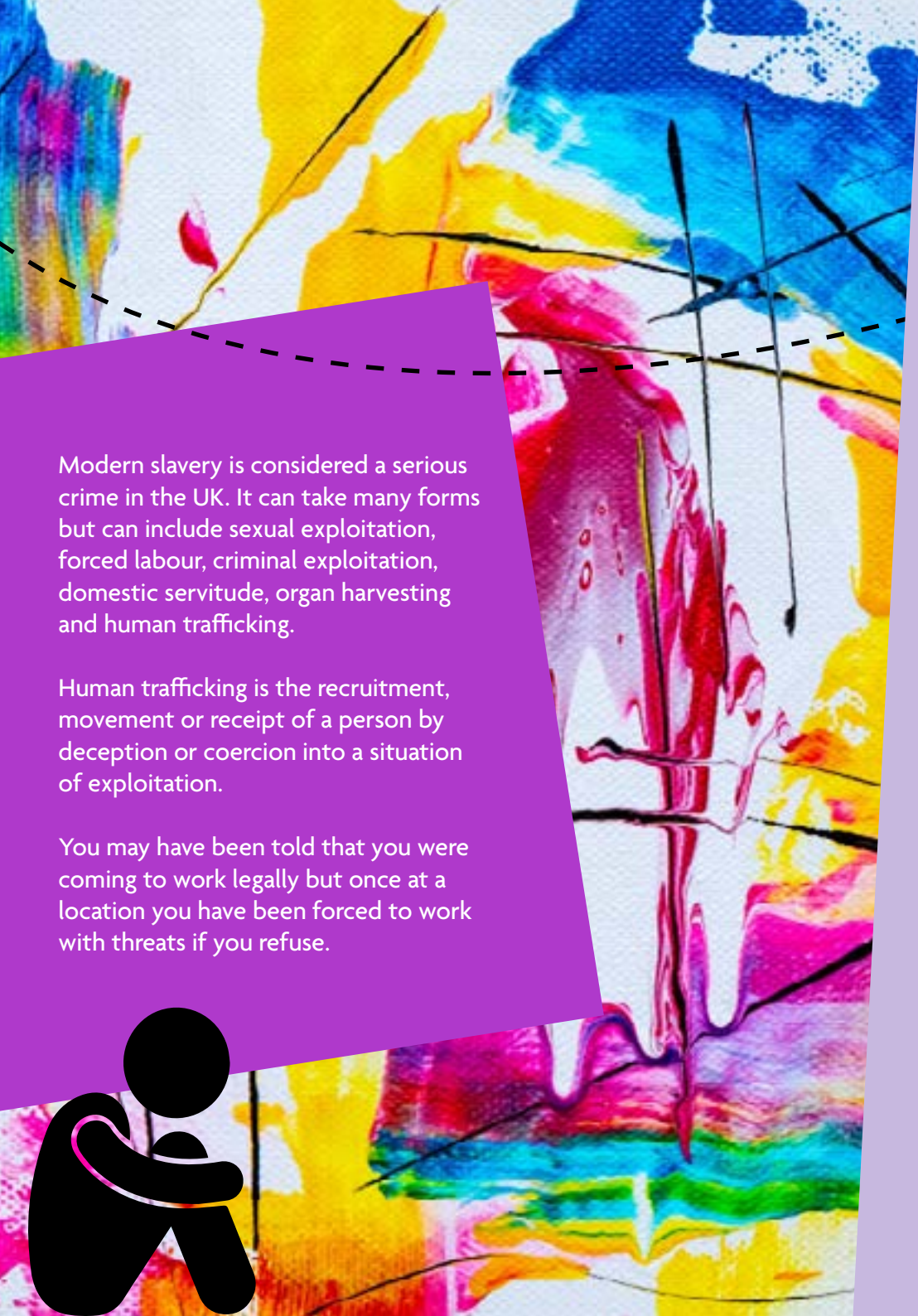


ACCESSING SUPPORT
AS A VICTIM OF MODERN SLAVERY
(ADULT)



west midlands
police and crime
commissioner

WEST
MIDLANDS
ANTI SLAVERY
NETWORK



Modern slavery is considered a serious crime in the UK. It can take many forms but can include sexual exploitation, forced labour, criminal exploitation, domestic servitude, organ harvesting and human trafficking.

Human trafficking is the recruitment, movement or receipt of a person by deception or coercion into a situation of exploitation.

You may have been told that you were coming to work legally but once at a location you have been forced to work with threats if you refuse.



THE NATIONAL REFERRAL MECHANISM (NRM)

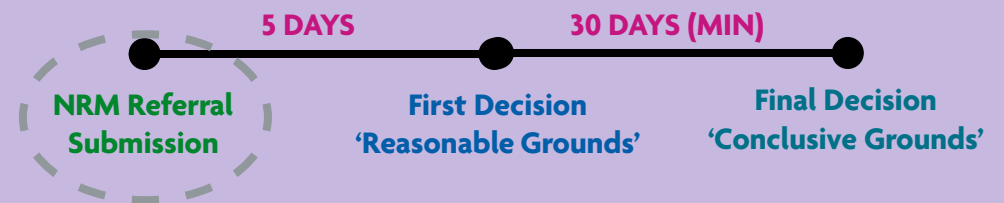
The National Referral Mechanism (NRM) is a system for identifying and referring potential survivors of modern slavery and ensuring that you receive the appropriate support.

If you want the UK Government to recognise you as a victim of modern slavery, you can request they consider your claim by asking a first responder to submit an NRM referral. Trained decision makers at the Home Office consider whether your claim meets the requirements to be a victim of modern slavery under law. Decision makers will first decide if there are **'reasonable grounds'** to suspect you are a victim of modern slavery. They aim to make this **first decision within 5 days**, and you are entitled to emergency accommodation during this time if you are destitute. If you receive a positive reasonable grounds decision, you are entitled to a certain level of support from the UK Government. **You cannot be removed from the UK whilst your claim is being considered.** You are entitled to a **minimum of 30 days rest and reflection period**, for some people this can last much longer.

During this time, the UK Government will gather more information about you and make a final decision (a 'Conclusive Grounds' decision) about whether you met the requirements to be a victim of modern slavery under law.

If you receive a positive Conclusive Grounds decision you may be entitled to additional support to recover.

If you are not ready to make this decision just yet, you can ask for a referral in the future. If you are at risk of abuse or have care and support needs, you may be entitled to support from your local authority under the [Care Act \(2014\)](#).



If you wish to be referred into the NRM...

Your first responder will complete an NRM referral with you. A first responder is a professional within certain organisations who are trained to make referrals into the NRM, such as:



Police



Salvation Army



Specialist Charities



Local Authorities

If you are an adult (over 18) you will have to give consent to be referred into the NRM. By consenting to an NRM referral, you also consent to your information being shared with relevant authorities such as Home Office departments and the Police. You do not need to report to the Police, but they may contact you and ask if you want support to do so. You will be asked for your personal information, an account of what has happened to you and your travel journey into and/or around the UK.

First Responders are trained to know the indicators of human trafficking and modern slavery to write information to support your claim. The First Responder should read everything back to you to ensure it is correct and you should request a copy of this form for your records. You may be moved into temporary accommodation whilst this process takes place, and you will be informed if you need to leave that accommodation when you receive your reasonable grounds decision.

If you receive a negative RG at this stage – **see section on non-NRM**, you can also ask your first responder to appeal this decision if you have additional evidence to support your claim.



Options for Care and Support in the NRM: OUTREACH SUPPORT OR ACCOMMODATION & SUPPORT



If you are given a **positive Reasonable Grounds** decision in the NRM, specialist agencies can offer you support. The Victim Care Contractor (VCC) can refer you to a support organisation who will assist you to access the following:

If you are destitute and have no entitlement to accommodation, or if it is not safe for you to stay where you currently live, you can access temporary safe accommodation.

If you already have somewhere safe to live, have an entitlement to accommodation or are not accepted into a safe accommodation, specialist support agencies can offer you outreach support. You will be allocated a caseworker from a local specialist organisation who will visit and offer you the support listed on the next page.

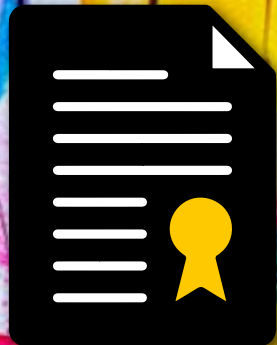


LEGAL ADVICE

With a **positive reasonable or conclusive grounds decision**, you are entitled to legal aid to access some forms of legal advice for free.

If required, you can discuss your immigration options and access some other areas of legal advice. If you don't have status in the UK, you should start thinking about your immigration options.

You should gather information that may assist you in completing an application and seek legal advice about the most suitable option for you.



IF YOU RECEIVE A POSITIVE 'CONCLUSIVE GROUNDS' (CG) DECISION



If you receive a **positive conclusive grounds (CG) decision**, this confirms **the Government believe you are a victim of modern slavery**. Your support provider will complete a recovery needs assessment with you. This assessment is to ensure you don't move out of support until you have reached a reasonable level of recovery and can safely move into the support of another organisation.

This will be a minimum of 45 days of extra support.

If you receive a **negative conclusive grounds (CG) decision**, this means the Government has not found enough evidence to suggest that you are a victim of modern slavery. You will have **9 days** to be supported to move out of the support organisation and access other support services if you need them. See the information overleaf for more detail about support you can access.



Negative Reasonable and Conclusive grounds decisions can be challenged in the process known as a Reconsideration Request. Reconsideration requests can be made if any additional information, that was not considered in your initial claim, becomes available or if you are concerned that the decision made is not in line with the policy. While everyone, including yourself, can make a reconsideration request we strongly encourage you to seek the support of your support provider, first responder or legal representative to assist you with this. Depending on your circumstances and the decision that is being challenged, you may be able to remain in support during the process of reconsideration.

IMMIGRATION OPTIONS AND LEGAL ADVICE

If you don't have a legal right to stay in the UK, you should start thinking about your immigration options. You should **gather information that may assist you in completing an application to remain in the UK** if that is what you want to do and seek legal advice about the most suitable option for you.

You **may or may not be entitled to financial assistance to access legal advice**, you should only get advice from **qualified legal advisors**, they may offer you legal aid, pro-bono or free legal advice centres. You should always **check beforehand if your legal advisor requires payment** for the service.

You can find an **immigration adviser** by visiting www.gov.uk and search for 'immigration adviser'. Alternatively, you can contact:

OFFICE OF THE
IMMIGRATION SERVICES
COMMISSIONER



Telephone: 0845 000 0046
Website: www.oisc.gov.uk

If you don't enter the NRM Or if you receive a negative reasonable (RG) or conclusive grounds (CG) decision.

Modern slavery is a very specific crime type. Receiving a negative decision may not mean that what happened to you isn't believed, but what happened to you **may not fit the criteria of modern slavery** and **you may be entitled to access alternative support**.

If you are at risk of abuse or have care and support needs, you may be entitled to support from your local authority under the **Care Act (2014)**.

It is **illegal** for someone to give you advice if they are unqualified or unregistered and you risk their advice not being accurate or up to date.

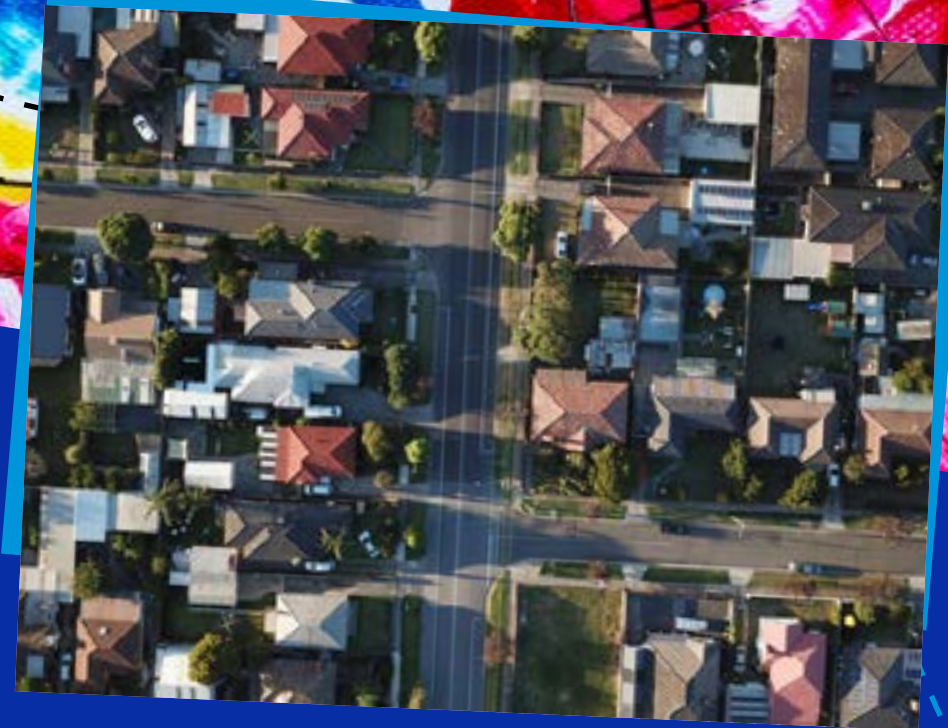
If you wish to return to your country of origin, **The Home Office Voluntary Returns Service** may be able to help you to return home. You can contact them on **0300 004 0202**. The team will discuss your return and the support you may need. If it is safe for you to do so, you can also contact your **Embassy** for support.

HEALTHCARE

Any person can register with a GP practice as an NHS patient.

There is no charge for any primary care (e.g. GP) or emergency medical treatment. You are also exempt from paying healthcare fees if you are an ordinary resident, asylum seeker or refugee or a Government recognised potential victim of modern slavery.

Some NHS medical care **will not be free** and you may be asked to pay ahead of certain medical treatment taking place – you should ask a medical professional any questions about your entitlement if you are unsure. The NHS may check your immigration status with the Home Office if they are unsure about your status, they should let you know if this takes place and can give you information about this process.



ACCESS TO HOUSING

If you are ordinarily resident in the UK or have certain types of leave to remain, **you may have an entitlement to housing in the UK** and this includes homelessness services.

If you do not have status in the UK, **you may not have entitlement to accommodation and may have difficulty accessing accommodation.** You should contact your local housing team for advice.

You can access advice from the **Citizens Advice Bureau** or a **legal representative** regarding your rights and entitlements.

ACCESS TO WELFARE BENEFITS

If you have settled status, a form of leave to remain such as Refugee Status or Humanitarian Protection, or the right to reside in the UK **you may be entitled to apply for Government welfare support, Universal Credit.**

You can get advice from the Citizens Advice Bureau, the Government website or a legal support provider to discuss if you are able to apply for welfare support.

ASYLUM SEEKER SUPPORT

If you are an asylum seeker or wish to lodge an asylum claim you may be entitled to **National Asylum Seeker Support (NASS)** see the information sheet for contact details.

It is advised that you access legal advice prior to lodging an asylum claim.



West Midlands Anti Slavery Network

We are a charity aimed at supporting victims of modern slavery and human trafficking.

If you have further questions or comments please contact us at westmidlandsantislavery.org or by scanning the QR code above with your smartphone.



YOUR NOTES

A large white rectangular area with a dashed black border, intended for taking notes.